

E2850B

REMIXING TRANSFER VEHICLE



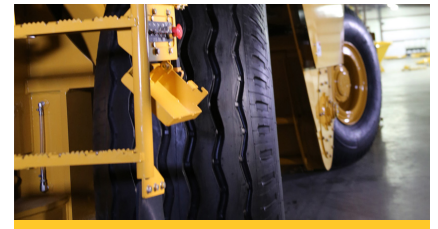
NON-STOP, NON-CONTACT PAVING.

With 25 tons (22.7 mt) of onboard storage, triple pitch remix augers and 600 tph (544 mtph) discharge capacity, the E2850B keeps the paving train moving while reducing particulate and thermal segregation for smooth, long-lasting roads.



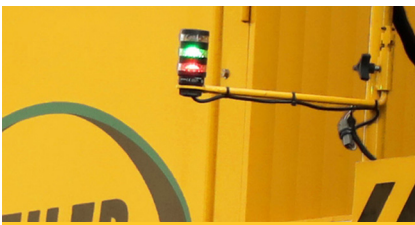
MATCH PAVING OUTPUT.

The variable speed elevator and conveyors allow the E2850B to match plant output while reducing wear. By setting chain speed to match production, the number of revolutions of the chain are reduced and larger packets of mix are carried with each slat, reducing material segregation.



UNMATCHED MANEUVERABILITY.

The rear steer option provides an inside turning radius of 14' (4.2 m). The crab and coordinated steering functions return to center with the auto center feature providing enhanced control on tight jobsites and when loading and unloading for transport.



STORAGE HOPPER MANAGEMENT.

The optional storage hopper management system features a proprietary sonic sensor that continuously measures the amount of material in the storage hopper. Two indicator lights allow the entire paving crew to know the material level at all times while the operator can see a percentage readout on the display.



COMPLETE CONTROL.

The 18" (457 mm) shifting operating platform and conveniently located controls provide the operator with excellent visibility and comfort. The paver hopper management system maintains a set distance to the paver while managing the material level in the paver hopper insert. The camera system features 4 cameras and full-color monitor.



DESIGNED AROUND CLEANOUT.

Full-width, hydraulic drop down floors along with four clam-shell doors for ground level access to the storage hopper and remix augers provide unmatched access for daily cleanout and weekly inspections. With the addition of the optional internal spray down system for chains and sprockets, the E2850B is designed to simplify the critical daily clean-out process.

E2850B SPECIFICATIONS

WEIGHT	75,000 lb	34 019 kg	TRANSPORT SPEED (MAX)	10 mph	16.1 km/hr	HYDRAULIC TANK CAPACITY	100 gal	378 L
TRANSPORT HEIGHT	11' 4"	3454 mm	WORKING SPEED	194 fpm	59 mpm	TURNING RADIUS	14'	4.2 m
TRANSPORT LENGTH	54' 1"	16 484 mm	CONVEYOR CAPACITY	600 tph	544 mtph	TIRES	High Flotation 21"-25" 28 ply	
TRANSPORT WIDTH	9' 10"	2997 mm	CONVEYOR SLAT WIDTH	36"	914 mm	GROUND DRIVE	4-Wheel Hydrostatic w/ 3 Speeds	
WORKING HEIGHT	16'	4877 mm	ELEVATOR CAPACITY	1,000 tph	907 mtph			
ENGINE	Cat® C7.1 Tier 4		ELEVATOR SLAT WIDTH	56"	1422 mm			
HORSEPOWER	300 hp	223 kW	FUEL TANK CAPACITY	150 gal	568 L			

POWERTRAIN

Cat® C7.1 Tier 4 Engine with 300 hp (223 kW)
4-wheel drive
Shift-on-the-fly 3-speed hydrostatic drive
194 fpm (59 mpm) working speed
10 mph (16.1 km/hr) transport speed
Optional rear steer with 14' (4.2 m) turning radius

OPERATING ENVIRONMENT

18" (457 mm) sliding operator platform
Convenient control locations on single panel
Dual side dump hopper control stations
Rear control station for cleanout and hopper insert placement
Digital controller for system calibrations
Dual fume extraction system
Optional storage hopper management system
Optional paver hopper insert management system
Optional distance to paver control
Optional camera system w/ 3 cameras and 7" (178 mm) color display

MATERIAL DELIVERY

25 ton (22.7 mt) storage hopper capacity
1,000 tph (907 mtph) elevator capacity
600 tph (544 mtph) discharge conveyor capacity
Variable speed elevator and conveyor
Dump assist hydraulic moving floor
Auto dump hopper cycle
Heavy-duty, cast dump hopper augers
Triple-pitch, cast remix augers
High torque, direct-drive motors
14' 9" (4.5 m) max conveyor swing in either direction
Windrow head attachment option

SALES AND SERVICE

Sold and serviced exclusively through Caterpillar dealers worldwide.

CLEANOUT

Full-width, hydraulic cleanout doors on elevator/conveyors
Full-width dump hopper cleanout door
Four clam shell doors for storage hopper access
Two hydraulic remix chamber cleanout doors
Optional internal spray down system

SERVICE/MAINTENANCE

Optional hydraulic conveyor chain tensioner
Chromium Carbide wear plate below conveyor foot shaft
Separated foot shaft bearings
Three large engine access doors
Easily accessible battery compartment
Braided electrical harnesses and sealed connections
Color-coded electrical wires
Optional auto greaser system

OPTIONAL EQUIPMENT

Rear steer
Truck hitch
Windrow head in addition to truck dump hopper
Conveyor auto chain tensioner
AR400 1/4" (6.35 mm) storage hopper liner
Chromium carbide floor plates
Separate 60 gal (227 L) tank for tire spray system
Chain and sprocket internal spray down system
Tire spray system
LED work lights (2 head, 6 work, 2 ground and strobe)
LED blade lights
Truck signal lights
12kW generator
Paver hopper management with distance to paver
Storage hopper management system
Camera system w/ 7" (178 mm) color display & 3 cameras
Automatic greaser - 45 points
13 (11.8 mt) or 17 ton (15.4 mt) bolt together hopper insert

WARRANTY

12 months standard. Extended warranty available.