



What's the Difference?

E2 SERIES MINI EXCAVATORS

10 REASONS TO CHOOSE CAT
OVER THE COMPETITION

10

REASONS TO CHOOSE CAT® 303.5E2 OVER THE COMPETITION

1 PRODUCTIVITY: Smart Technology

Why trade performance to decrease fuel consumption? With **Smart Technology** you can perform at 7% greater efficiency while saving up to 8% on fuel economy. The Cat 303.5E2 with **Smart Technology** offers superior performance by collecting input from the machine and delivering the required power as output. This allows integration of a more fuel efficient engine while maintaining machine performance. The competition does not offer a mode to improve fuel efficiency.



Cat

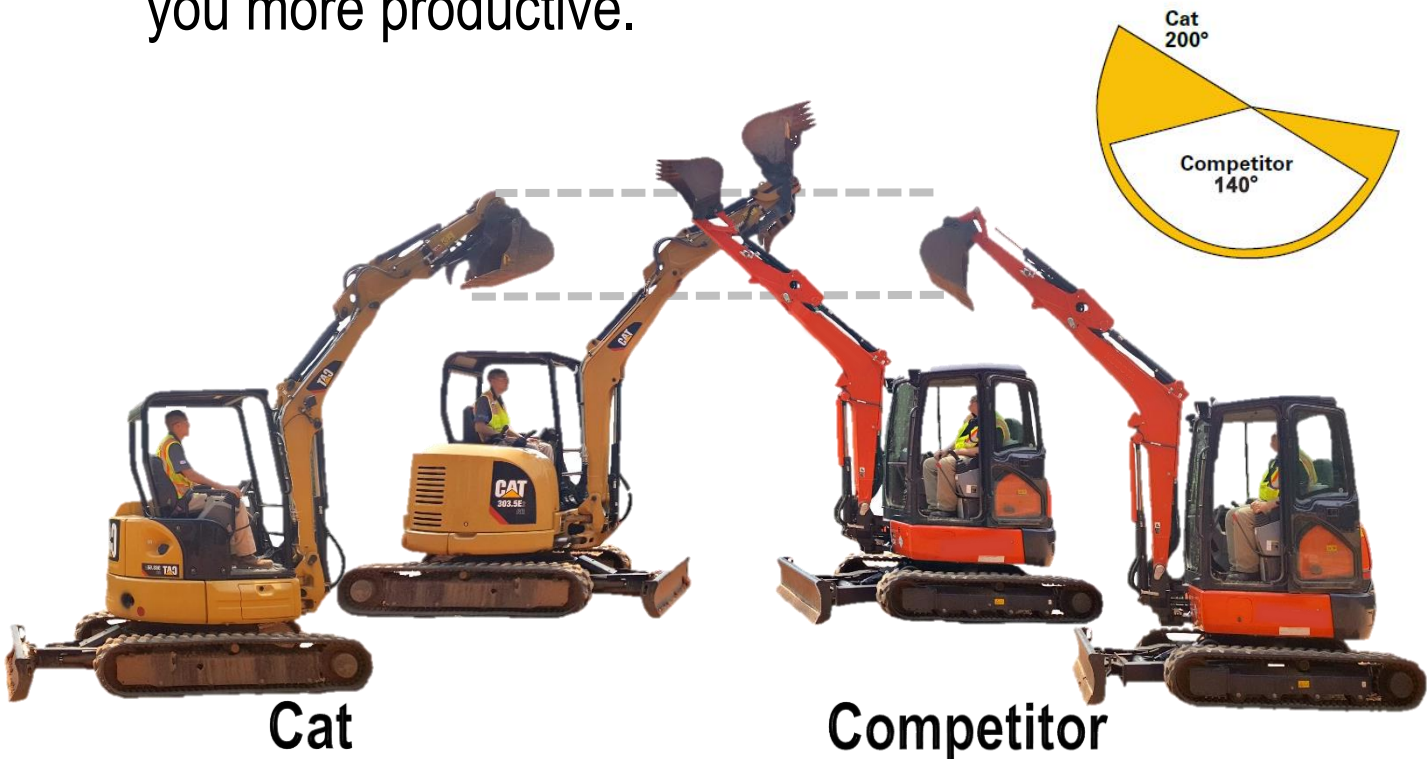


Competitor



2 PRODUCTIVITY: Industry Exclusive Bucket Rotation

Cat **STANDARD** buckets come with 200 degrees of bucket rotation without losing breakout force or changing pin positions. This feature means better material retention, easier work around obstacles and deeper vertical trench digging. The competition has only 140 degrees in their power position and loses 30% breakout force in their 200 degree speed position. The competitive design compromise slows you down while the design of the Cat machine makes you more productive.





3 OPERATOR COMFORT: ERGONOMIC LAYOUT

The ergonomic control layout and spacious cab are engineered to minimize operator fatigue and increase productivity. The boom swing and auxiliary hydraulic functions are located at your fingertips providing smooth, easy and comfortable operation. Armrests are adjustable to provide optimal comfort. Joystick controlled auxiliary functions eliminate foot pedals and free up the floor for ample leg room and operator comfort.

The competition only offers fixed armrest positions and has foot pedal boom swing controls crowding the already small amount of leg room available.



Cat



Competitor



4 OPERATOR COMFORT: **Front Window System**

The Cat front window system offers superior visibility and efficient storage. The lower front window slides into the upper section of the frame. Both sections are then raised and stored in the roof, ensuring you never misplace it. The Cat Mini Excavator design allows for a vented position and protected bottom window. The lower glass on the competitive model can be removed separately, but could be prone to breakage as there is no place to store it.



Cat



Competitor



5 VERSATILITY: Work Tool Customization

The Cat **STANDARD** COMPASS digital control panel gives you the ability to customize your auxiliary hydraulic flow to optimize the performance of your work tool to the machine. It allows you to set the auxiliary hydraulics at a continuous flow rate and then dial in that flow for a perfect match with your work tool. This feature is **STANDARD** which means increased jobsite productivity and improved work tool performance. The COMPASS monitor provides an intuitive design that makes it easy to understand, save flow rates and change rates quickly.

The competition offers the ability to change flow rates for specific tools but the operator must designate both a and b port flows independently. This makes it more challenging for the operator and requires unnecessary steps. Additionally, the operator must tell the machine that they will use a thumb or aux function on every key cycle. The complex design and functionality leads to decreased jobsite productivity.



Cat



Competitor



6 VERSATILITY: COMPASS Monitor

The all inclusive Cat **STANDARD COMPASS** digital control panel enables you to work to optimal efficiency by providing features such as the site reference system, rear view camera and courtesy light.

The Site Reference System displays the pitch and roll of the machine to aid in grading and level trenching. Using this technology you are able to improve efficiency and job site finishing.

The optional Rear View Camera serves as a positioning aid to increase productivity and efficiency. With improved visibility on the jobsite using the rear view camera, applications are easier to execute.

The Courtesy Light remains illuminated for a set period of time and ensures you are able to safely exit the machine in low light conditions, by providing a clear view of the jobsite.

The competition does not offer these features.



Cat



Competitor



SAFETY:

Superior Safety & Security

Don't let the competition charge you for safety and security! Lower your risk of jobsite accidents, insurance rates and repair costs with our industry leading **STANDARD** safety and security features that include: best in class visibility, horn, rear view mirror, work lights, backup alarm, an emergency exit, hydraulic safety interlock system and our Cat integrated and factory installed security system.

Competitor charges up to \$575 for non-standard safety features, including the travel alarm. A security system is **NOT AN OPTION**.



Cat



Competitor



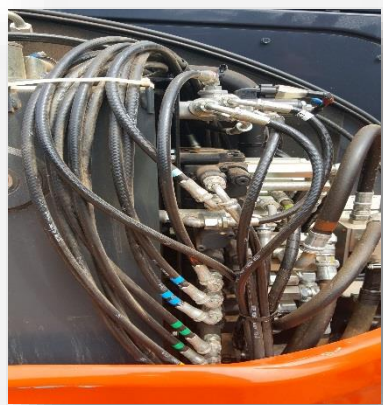
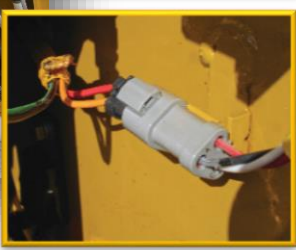
8 RELIABILITY: Quality Components

What's under their hood? Cat high quality sealed electrical connectors, Cat ToughGuard™ Hose, hydraulic oil with a 2,000-hour life and coolant with a 6,000-hour life stand up to even the toughest jobs and keep you working when it counts and come **STANDARD.**

The competition recommends replacing all fuel, coolant and ac hoses at the 2 year or 2000 hour interval. It is also recommended to drain the fuel tank every 50 hours, slowing down jobsite productivity. Cat ToughGuard Hose is highly durable and only needs replaced as necessary.



Cat



Competitor



9 RELIABILITY: Serviceability

Time is money and ease of access is **STANDARD** on Cat machines. Ground level access to filters and main control valves allows you to perform regular maintenance without the need for raising the cab like the competitors. All hoses are marked with part numbers to assist you in repairing the hose in a timely manner. This helps keep your machine running at optimal efficiency, reducing down time and increasing productivity.



Cat



Competitor



10 Dealer Capabilities

Your Cat Dealer will be there for the life of your equipment, bringing you the tools, technologies, service and know-how that keep your machine productive and make it pay. So when you're looking for a complete and capable parts and service provider, or you're making the decision to buy, rent, repair, rebuild or sell a machine for your business, you owe it to yourself to know the people at your local Cat dealer.

- 24/7 Online PartStore
- Parts drop network for convenient delivery
- Multiple Locations to serve you, all across the state
- 24 hour Emergency Field Service
- Customized Fab/Weld Shops
- Electronic Invoicing
- Learning Facility
- and much more!
- Initial Price

Cat

Competitor

BUILT FOR IT.

CAT, CATERPILLAR, their respective logos, "Caterpillar Yellow," the "Power Edge" trade dress as well as corporate and product identity used herein, are trademarks of Caterpillar and may not be used without permission.
©2016 Caterpillar All Rights Reserved.

