



MORBARK®



MADE FOR MORE TO KEEP PACE WITH YOU

6400XT WOOD HOG HORIZONTAL GRINDER

Ideal for processing wood waste, land clearing and storm debris into marketable end-products, the **6400XT Wood Hog** weighs in at less than 96,500 lb (43,772 kg) and measures 11'10" (3.6 m) wide with the standard Caterpillar 325L undercarriage with 600 mm double grousers, allowing the unit to be transported to nearly all domestic and international markets. The infeed bed is 24 inches (60.96 cm) longer than previous Morbark grinders in the 1,000-plus horsepower range and has sloped sides. This configuration improves operator sight lines for more efficient loading of material.

FEATURES AND BENEFITS

- Extended area between the hood and the engine provides additional working space for better access to components for general maintenance or to change screens.
- The Morbark Integrated Control Systems (MICS) automatically adjusts feed rates and monitors pressures and feed wheel position to maximize production and engine efficiency.
- Independent hammermill drive belt tensioner
- Hydraulically operated hood to allow quick and easy access for changing grates
- The patent-pending PT Tech hydraulic torque limiter allows for the ultimate driveline protection while allowing ease of setting adjustments based on the grinding application. In addition, the Torque Limiter will release and disconnect from the main driveline when the set torque is exceeded and will initiate a series of protocols to prevent further damage while notifying the operator that the system has been tripped.

MORBARKDEALERS.COM



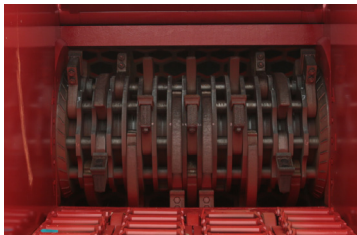
MORBARK®



MORBARK® 6400XT WOOD HOG SPECIFICATIONS

GENERAL	US	METRIC
Length	44'	13.14 m
Height	11'10"	3.61 m
Width	11'5.5"	3.49 m
Gross Weight (approx.)	96,500 lb	43,771 kg
Engine	CAT	
Horsepower	1,050 to 1,200 HP	783 to 895 kW
Fuel Capacity (tank)	365 gallons	1,382 liters
Hydraulic Oil	250 gallons	946 liters
Infeed Opening	60" x 60"	152.4 cm x 152.4 cm
Screen Area	5,406 sq in	34,877 sq cm
Tracks	Caterpillar 325L undercarriage with 600mm double grousers	

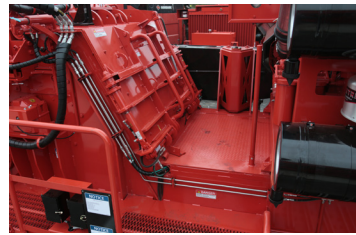
Specifications may vary with equipment options



Hammermill



External Adjustable Break-Away Torque Limiter



Extended Maintenance Platform



Removable Infeed Floor

EQUIPMENT HIGHLIGHTS

- Sloped infeed walls for improved visibility
- Variable speed infeed system consisting of hydraulic live floor equipped with (4) strands of WDH-120 welded chain and top compression feed roll with internal hydraulic drive
- 42" x 61.375" (106.7 cm x 155.9 cm) hammermill system with (18) 2.25" replaceable hammers, (18) 2.25" replaceable rakers, and (18) 3.5" Alpha 3 inserts
- Dual belt discharge system consisting of primary aggregate belt conveyor discharge onto a secondary stacking conveyor
- Magnetized end pulley with collecting slide tray for ferrous metal removal
- PT Tech hydraulic clutch
- Remote control with tethered back-up system
- Magnetized end pulley with collecting slide tray for ferrous metal removal
- 11-hp (8.2 kW) air compressor with lockable enclosure
- Externally adjustable break-away torque limiter
- Hydraulic Rod Puller
- ESPAR heating system for cold-weather start
- Vtection® Vibration Detection System
- Spare Grate Rack

Updated 6/29/23

